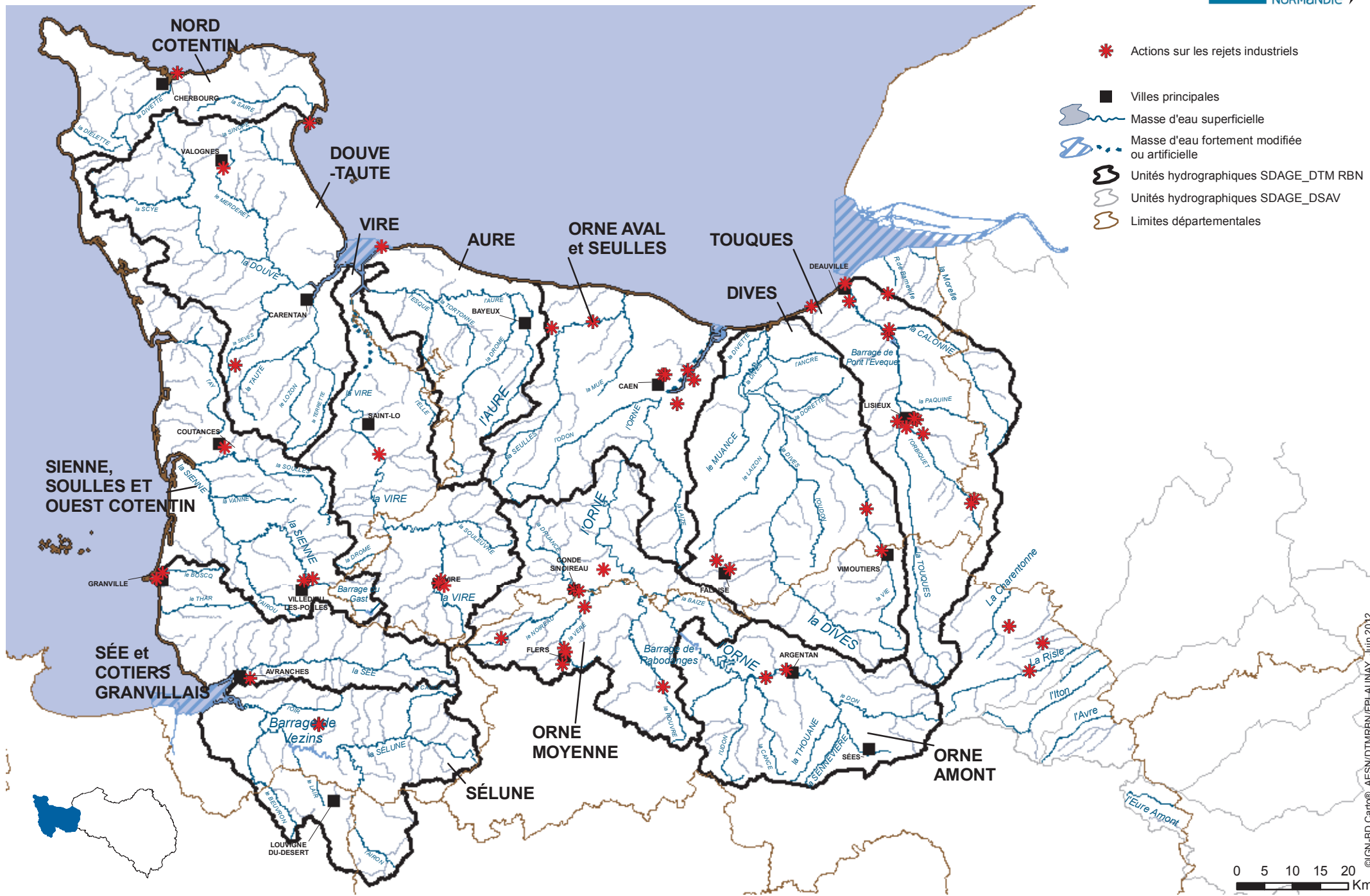









Actions prioritaires sur la réduction des substances dangereuses



-  Actions sur les rejets industriels
-  Villes principales
-  Masse d'eau superficielle
-  Masse d'eau fortement modifiée ou artificielle
-  Unités hydrographiques SDAGE_DTM RBN
-  Unités hydrographiques SDAGE_DSAV
-  Limites départementales